



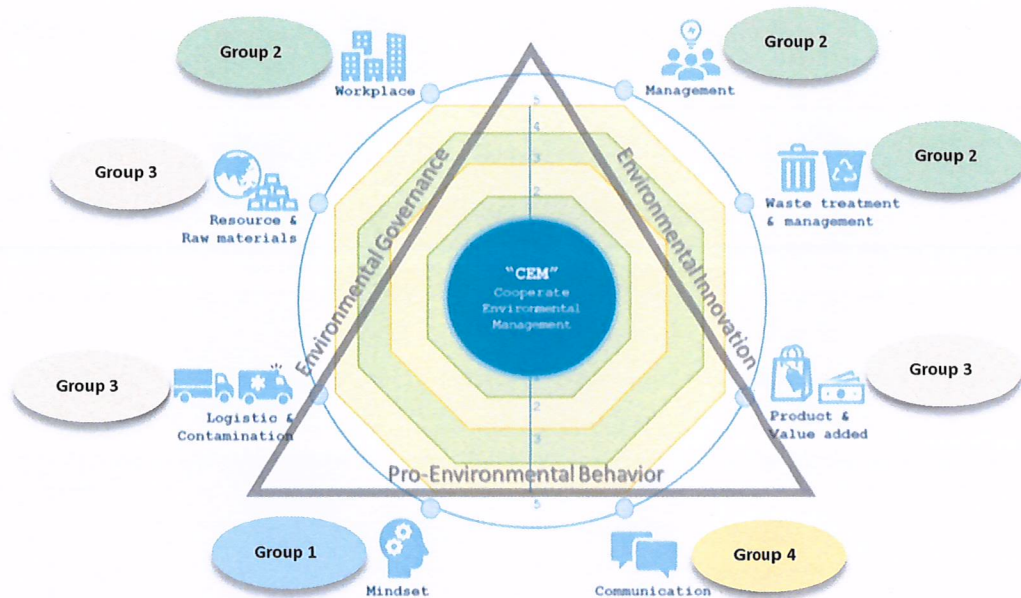
-Translation-

BDMS Earth Healthcare Policy

Economic and social expansion coupled with the requirement of an increased consumption of natural resources are considered major causes of the decadence of natural resources and environmental problem that are increasingly severe nowadays. One example that can be clearly seen is air pollution in the city owing to a higher number of vehicles on the road as well as a natural factor that causes a closed climate situation, causing an accumulation of air pollution at the ground level which in turn has a direct impact on the people's health in general.

The initiative of an efficient environmental management is; therefore, deemed a significant solution to sustainably solve such problem in order to conserve and restore natural resources along with the development of the country. The policy in handling such environmental problem is to specify clear methods and goals in managing and solving the problem in accordance with Sustainable Development Goals (SDGs) which have been mutually established by the Global Community. Besides, in developing the country in response with current needs and requirements without exploiting our younger generations, we should emphasize on creating a good balance of social, economic and environmental dimensions to move forward to sustainability in the future, including an integrated development that promotes balance between human beings and the environment.

BDMS realizes this importance and consistently develops the quality of life of the community and the society at large. To facilitate a continued operation in terms of society and environment, BDMS; thus, has stipulated its environmental policies to foster a participation in resource management within the organization and to build the personnel with an attitude and involvement in environmental management that ultimately leads to the creation of organizational foundation that operates its business in an environmental-friendly manner while being in line with the world's strategic guidelines that stress on sustainable development. Besides, BDMS has constantly promoted an environmental conservation culture to its personnel and nearby communities to create mutual benefits in a concrete, clear, transparent and verifiable manner. BDMS has specified the guidelines of BDMS Earth Healthcare which can be divided into 4 major areas as follows:



Group 1: Building Eco-mindset

To encourage the personnel of the organization to have an awareness of social responsibility and environmental conservation

1. To encourage and instill an environmental awareness to become the responsibility of every executive and staff through education and training as well as a learning of different forms of the environment based on 6 criteria of environmental governance which comprises of the following: the rule of law, morality, transparency, participation, responsibility and worthiness.
2. To disseminate policies, objectives, goals and operation results in terms of organizational environment to staffs, personnel or any persons working for the organization via an efficient communication in accordance with Berlo (Berlo's SMCR Communication Model). This model consists of (1) the sender must possess communication skills and adequate knowledge (2) message or content intended to communicate to the receiver must be complete and well-sequenced for an easy understanding (3) communication channel and media employed to easily reach the receiver and (4) whether the receiver will receive the message efficiently or not will depend mainly on his/her social background, culture, knowledge and attitude. These factors must be taken into account in designing methods to appropriately and efficiently communicate a body of knowledge.

Group 2: Designing Better Environment

To design and create workplace environment, environmental management system and guidelines that appropriately respond to potential pollution problems

1. To maintain and control the condition of the surrounding area of the organization to meet the quality and good living of every relevant party by emphasizing on Green Building, Environmental Impact Assessment (EIA) and Environmental Health Impact Assessment (EHIA).
2. To apply the Environmental Management System (EMS) of the organization for practice and continued improvement through standardized operation which is acceptable at an international level.
3. To minimize and control the amount of pollution resulting from the organization's activities to incur the least environmental impact in accordance with 5 Rs guidelines (reduce, reuse, recycle, repair and reject) and circular economy to enable the most efficient use of resources, including pollution treatment so as to comply with Thailand's respective laws and regulations or to conform to the international standards.

Group 3: Moving to Green Business

To move forward to an environmental-friendly business through the supply chain to minimize potential impact on the environment

1. To conserve and enhance consumption efficiency of raw materials, natural resources (water/energy) and fuel for clean and efficient transportation, including emergency response planning and disaster and emerging pollution management
2. To design and create valuable products and services that are environmental-friendly (Eco-product and Service) by taking into consideration the impact throughout green supply chain, Green Procurement to ensure Sustainable Consumption and Production (SCP).

Group 4: Sustaining Social Engagement

To foster participation and mutual benefits in a sustainable manner for good environment and quality of life within the society

1. To promote participation and gross happiness of every stakeholder and community in terms of health, environment and quality of life through Social Startup Success procedures which consist of 5 key strategies; namely, initiative testing, impact measurement, capital procurement trial, team leading through mutual operation and

impressive story telling. Such strategies mentioned earlier will lead to PMSM procedures which include Participation, Mutual Benefits, Social Impact and Measurable.

2. To create, disseminate, learn and exchange experiences in environmental management with every sector in the society to promote awareness, knowledge, accurate understanding and positive attitude towards environmental conservation for general public and sustainable ownership of the environment to finally lead to a change into pro-environmental behavior.

Such four policies mentioned above will ultimately lead to activities that encourage people's good quality of life, good environment and growth based on BDMS's initiative of "Growth, Balance, Sustainability".

BDMS has specified 7 environmental challenges that are geared towards its goals of sustainable development as indicated below:

1. Garbage and hazardous waste management
2. Minimize carbon dioxide emission to gear toward low carbon society
3. Resource management in the mutual dimension between water and energy
4. Restore, create and further the community's projects that promote ecological system conservation
5. Promote sustainable production and consumption throughout the entire value chain of the organization
6. Promote the creation of environmental-friendly innovations and products
7. Encourage the community's participation by disseminating and exchanging knowledge with the community that leads to the behavioral change that is environmental-friendly